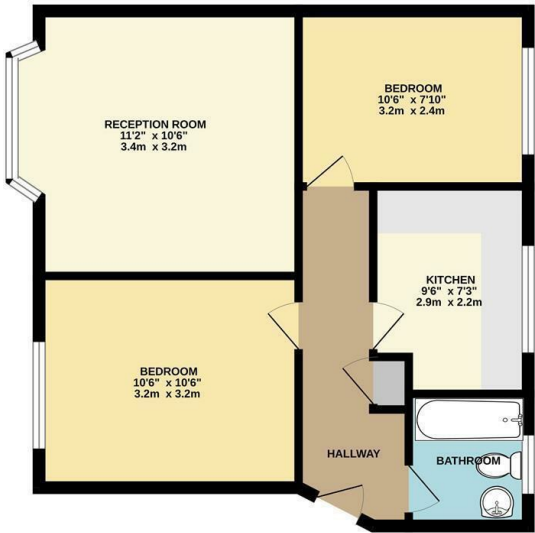


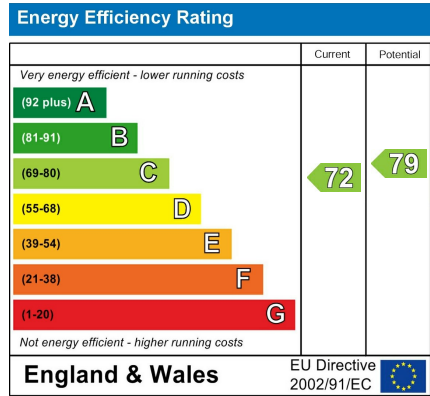


SECOND FLOOR



TOTAL FLOOR AREA: 527sq ft. (49.0 sq m.) approx.
While every effort has been made to ensure the accuracy of the figures contained herein, measurements of doors, windows, rooms and any other items are approximate and no responsibility is taken for any error, omission or misstatement. The data and associated documents are issued for use as a guide only and are not to be relied upon for any purpose. The services, systems and appliances shown on the floor plan are not guaranteed and no guarantee as to their operability or efficiency can be given.
© Churchills Estate Agents Ltd 2023

Council: Redbridge | Council Tax Band: B | Floor Area: 527.00 sq ft



The Agent has not tested any apparatus, equipment, fixtures and fittings or services and so cannot verify that they are in working order or fit for the purpose. A buyer is advised to obtain verification from their solicitor or surveyor. References to the tenure of a property are based on information supplied by the seller. The agent has not had the sight of the title documents. A buyer is advised to obtain verification from their solicitors.

CHURCHILL
estates



CHURCHILL
estates

Avondale Court, London, E18 2RD
Offers Over £325,000 Leasehold - Share of Freehold

Bedrooms: 2 | Reception Rooms: 1 | Bathrooms: 1



Request a Viewing: **0208 530 3333** Email: **southwoodford@wearechurchills.co.uk**



A Well presented two bedroom first floor flat situated in the ever popular Churchfields, within a short walk of local shops, supermarkets, restaurants and South Woodford Central Line station for a straightforward commute into London. The flat is leasehold with a share of freehold and benefits with communal gardens and resident parking.

COUNCIL TAX B
 SHARE OF FREEHOLD
 900 PLUS LEASE
 EPC D
 SERVICE CHARGE £390 PER QUATER

